



CMP9611 AND CMP9612

WI-FI 6 PERFORMANCE W/BLE & 802.15.4

DUAL AND TRI-PROTOCOL INDUSTRIAL- GRADE WIRELESS FOR IOT



The CMP961x delivers the performance and network optimization capabilities of Wi-Fi 6, which is critical for today's complicated and crowded wireless systems. Moreover, it offers flexibility to OEMs and users to leverage lower bandwidth and longer-range protocols to address applications that have their own unique needs. CEL is offering its standard high-performance antenna and a new innovative antenna which delivers extra long range in harsh environments. With the ability to support Linux or RTOS systems, the CMP961x is versatile and ready for integration with almost any MCU or MPU for a variety of applications.

WIRELESS FEATURES

- CMP9611...Wi-Fi 6 BT5.2
- CMP9612...Wi-Fi 6, BT5.2, 802.15.4(MATTER/Thread/Zigbee)
- Interfaces - Wi-Fi/SDIO, BLE/UART, 802.15.4/SPI
- Dual-Band 802.11 ax
 - Tx: +20 dBm
 - Single Stream: 80MHz Channels
- BLE 5.2
 - Tx: 20 dBm max (1M PHY)
 - 2 Mbps, Long Range, AoA/AoD
 - Advertising Extensions
- Low Power Consumption
- Long Range & Broad Coverage
- TWT
- WPA3 Security
- Dedicated, Independent CPUs & Memory for BT & WiFi

ANTENNA OPTIONS

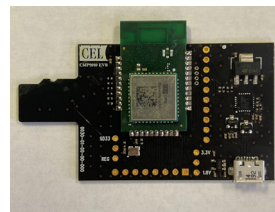
- Integrated Dual-Band PCB Trace & All-Terrain Antenna
- MHF4 connector

OTHER

- Certifications: FCC/IC/CE
- 16.64 x 27.80 x 3.47 mm
- Industrial Temperature: -40 C to +85 C Operation
- Castellated Edge Connections to HOST PCB

EVALUATION PLATFORM

- SD Interface Board for Easy Evaluation and Development



HOST DRIVER SOURCE CODE

- Linux/Android for MPU
 - Pre-tested and integrated in NXP's iMX 6/7/8 SDKs, Others MPUs supported
- FreeRTOS for MCU
 - Pre-tested and integrated in NXP's RT1170/1064/1060/1050/1024/1020 SDKs

TOOLS AND SUPPORT

- MCUXpresso IDE
- Documentation: Hardware Design Guide, Software QSG
- CEL Software Repository

APPLICATIONS

- Healthcare and Medical Devices
- Building Automation
- Retail/POS Terminals
- Smart City
- Smart Home
- IP Cameras
- Connected Tools